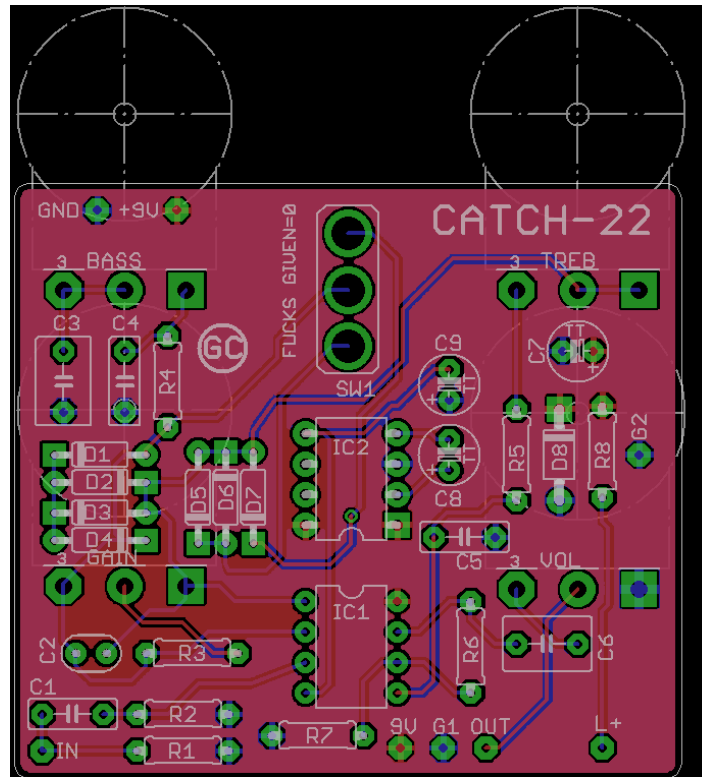


GRIND CUSTOMS FX

WWW.GRINDCUSTOMSFX.COM

CATCH 22



R1	2M2
R2	470K
R3	3K3
R4	3K3
R5	1K5
R6	3K3
R7	3K3
R8	CLR

C1	47N
C2	100P
C3	1U
C4	33N
C5	10N
C6	1U
C7	100U
C8	10U
C9	10U

D1-D7	1N914
D8	1N4739A 9.1V ZENER
BASS	B50K
GAIN	A1M
TREBLE	B50K
VOLUME	A10K
IC1	TL072/TLC2272
IC2	TC7660SCPA/ ICL7660SCPA

GROUP HUG

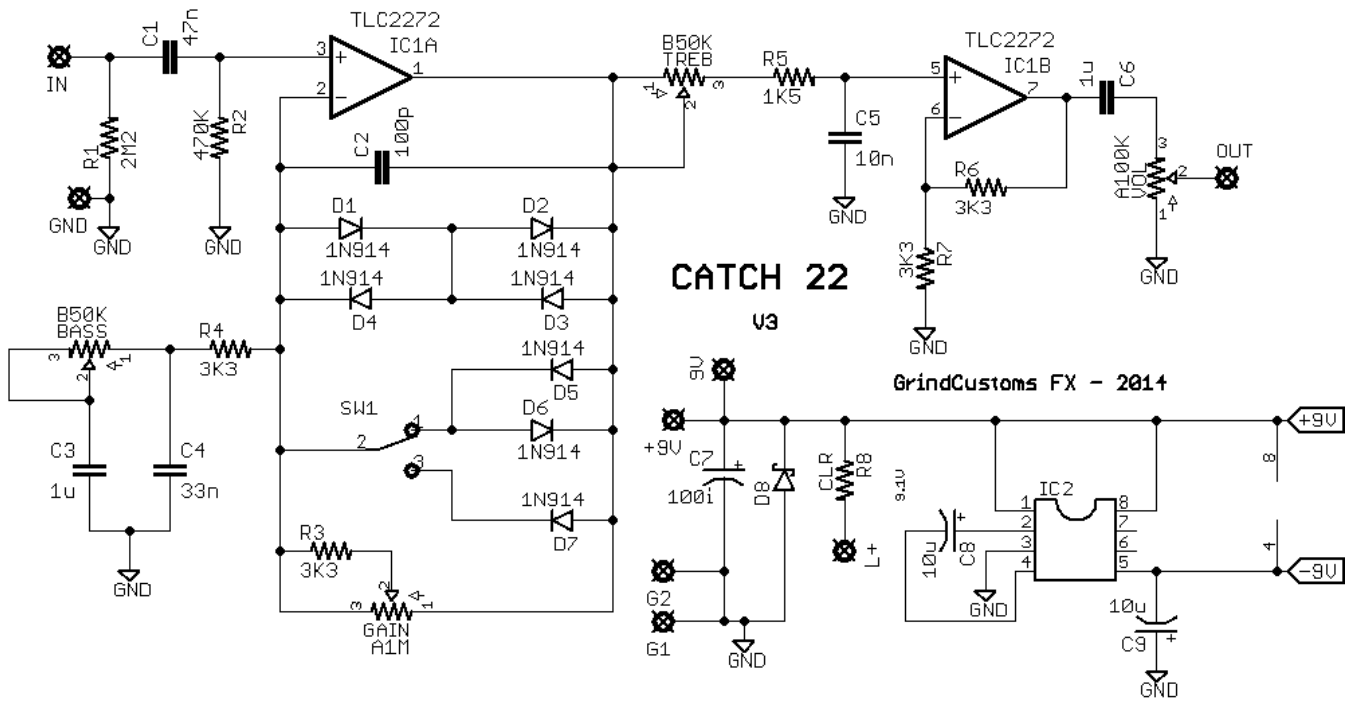
This is Rej's take on a famous boutique OD. It however, is not a clone! The Catch 22 deviates from the original design in the name of a bit of extra headroom and transparency! PCB wrangling by Forrest.

We even got some unexpected help from the designer of the original circuit who suggested a cool mod *doffs cap to Paul* Whattaguy!

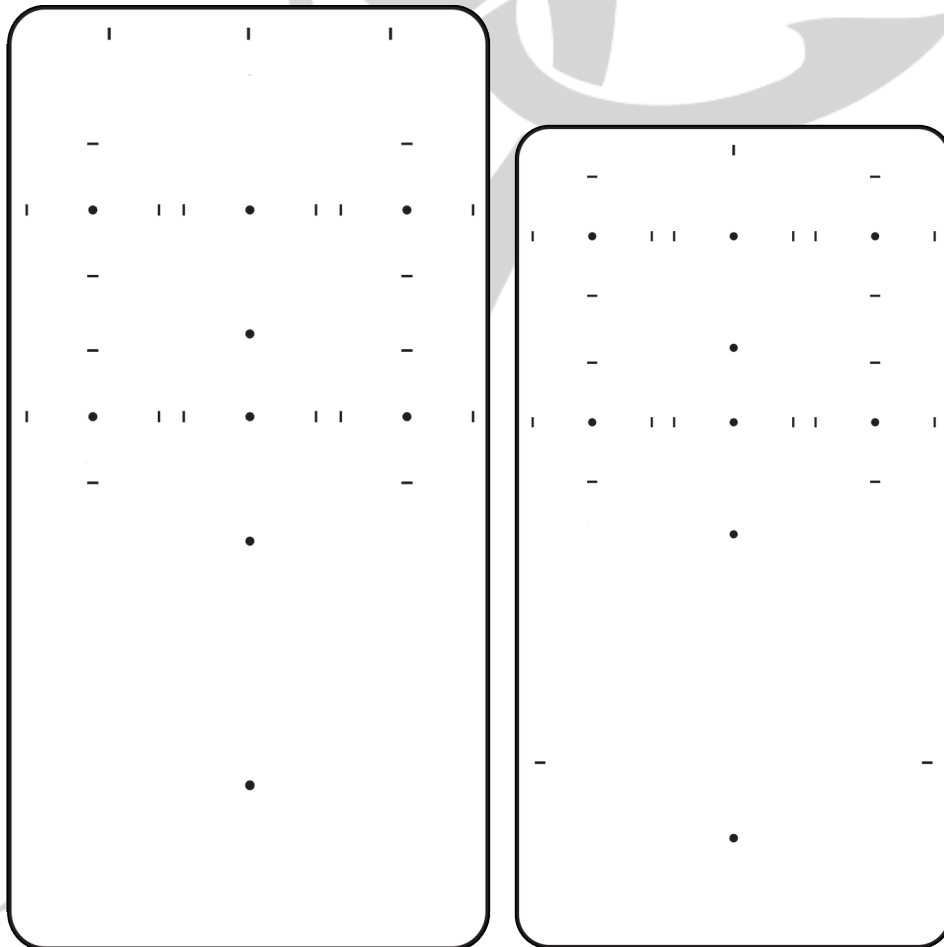
Try a A25K vol pot with a 18K resistor across it (L1 to L3).

GRIND CUSTOMS FX

WWW.GRINDCUSTOMSFX.COM



STANDARD 125B / 1590B DRILLING TEMPLATES



GRIND CUSTOMS FX

WWW.GRINDCUSTOMSFX.COM

The PCB was designed to work either in a 1590B or 125B enclosure. There are extra ground pads and 9V pads to give alternate ways of wiring it up, they don't need to be all connected. Also, if a bypass daughter board with LED is used, you can omit the on-board current limiting resistor (CLR).

